

**Placeholder for
Partner logo**

Microsoft[®]
CERTIFIED

Partner



The Windows[®] 2000 Servers: Delivering the Level of Reliability You Need

Name

Title

Department

Company

Welcome

- **Agenda**
 - **Technology Reliability today**
 - **What are the challenges?**
 - **How can we achieve Reliability?**
 - **Demonstrations and success stories**
- **Goals**
 - **Understand the Reliability benefit**
 - **Take the first steps**

Who are we?

- **[Insert Company Name Here] is a Microsoft Certified Partner**
 - **What does this mean to you?**
 - **We have proven Microsoft expertise**
 - **We partner with Microsoft which allows us access to the most up to date training and technology to support your business needs.**
 - **We have access to 24X7 support from Microsoft to help support our customers mission critical applications**

What do we focus on?

- [Insert company-specific information here]

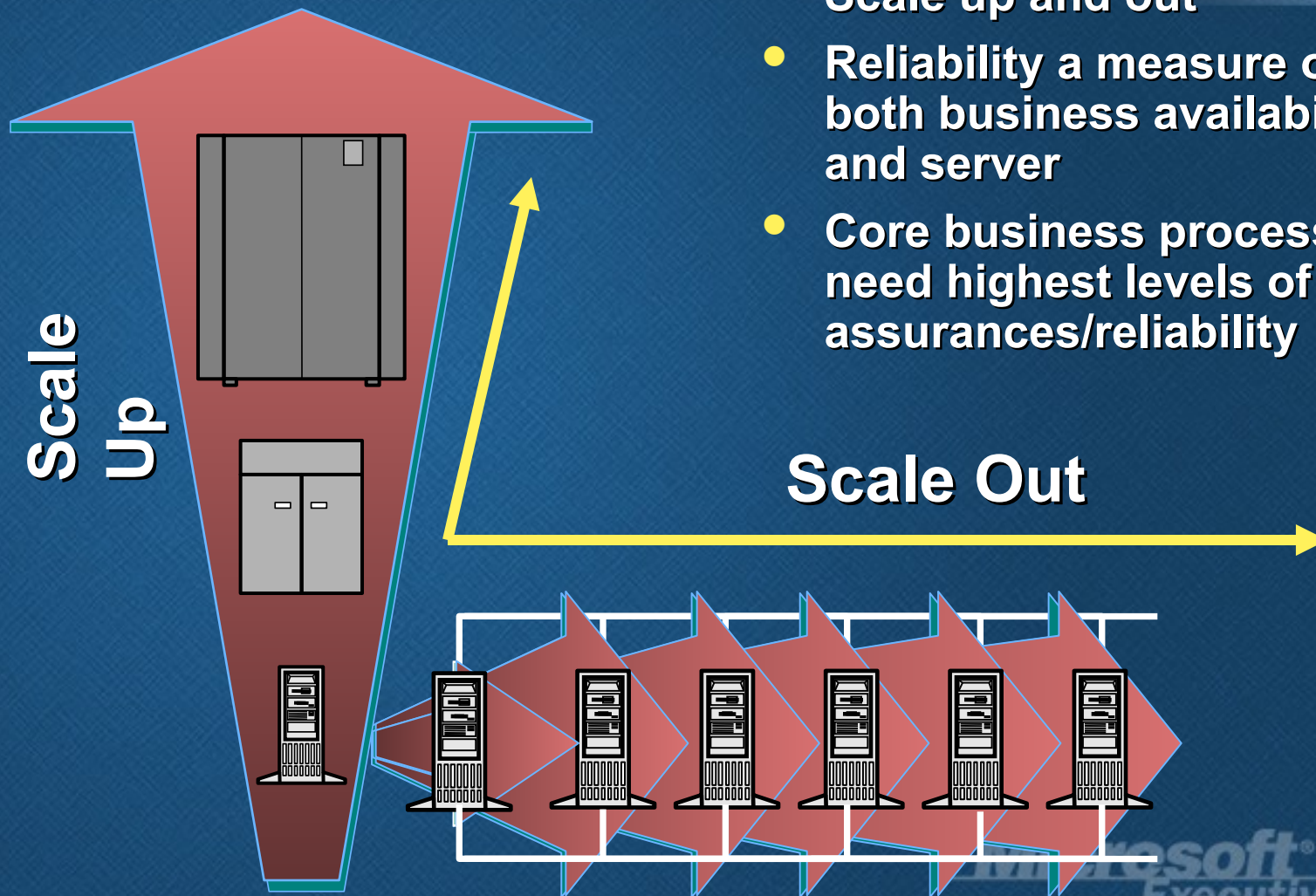
Building the Solutions

- **Support business with reliable technology**
- **Flexible technology foundation**
 - **With existing technology and hardware**
 - **Multiple vendors**
 - **Minimum downtime during solution deployment**
- **IT investments more strategic**
 - **Quantifiable benefits**
 - **Business impact of investments in IT**

Business Value of Reliability

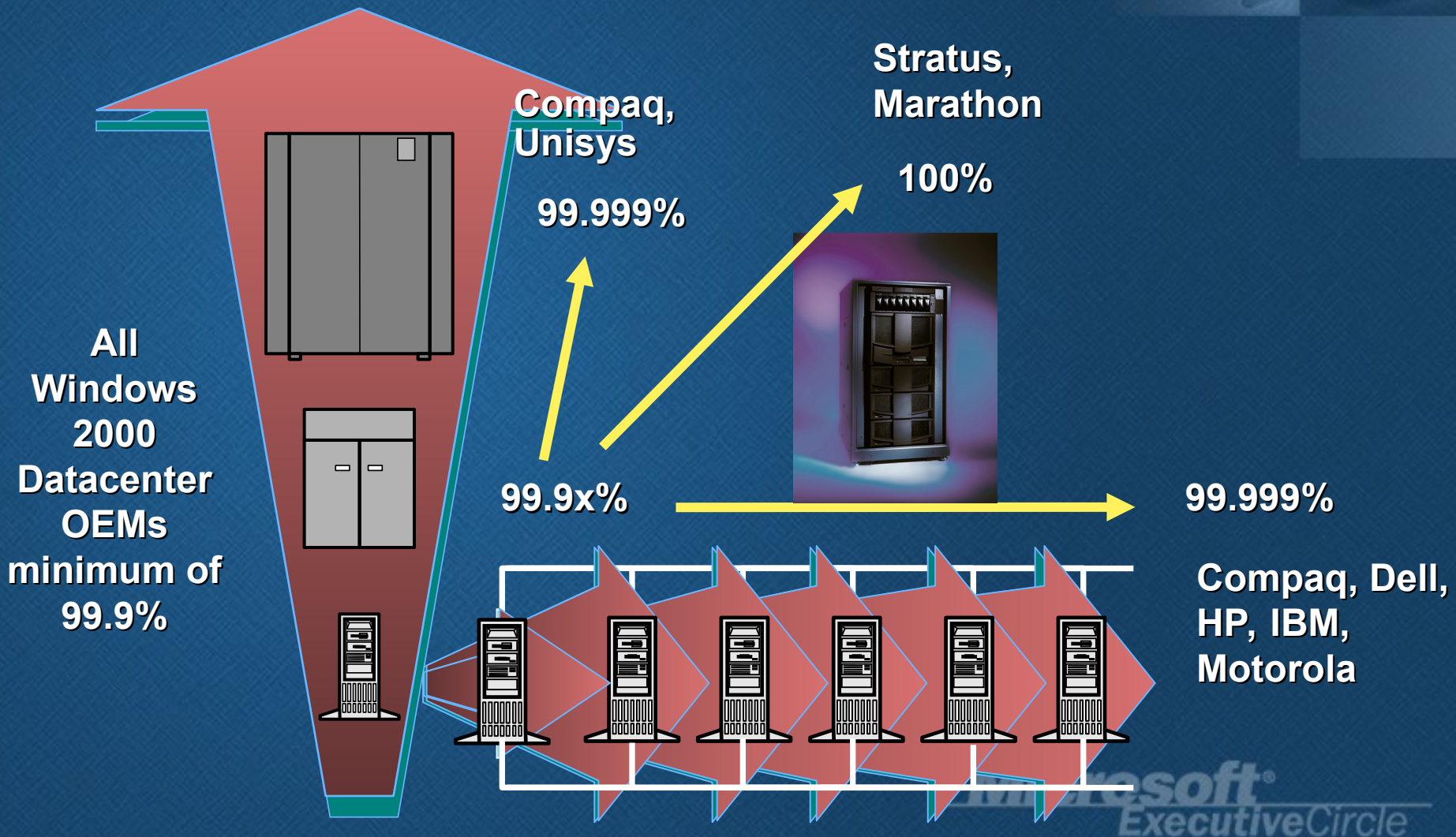
- **Lower TCO**
 - Reduction in total cost of workstation and server
 - Reduce administration costs
 - Improved User productivity
 - Reduce downtime
- **Implemented within a reasonable timeframe**
- **Provide end-to-end solution**

Flexibility

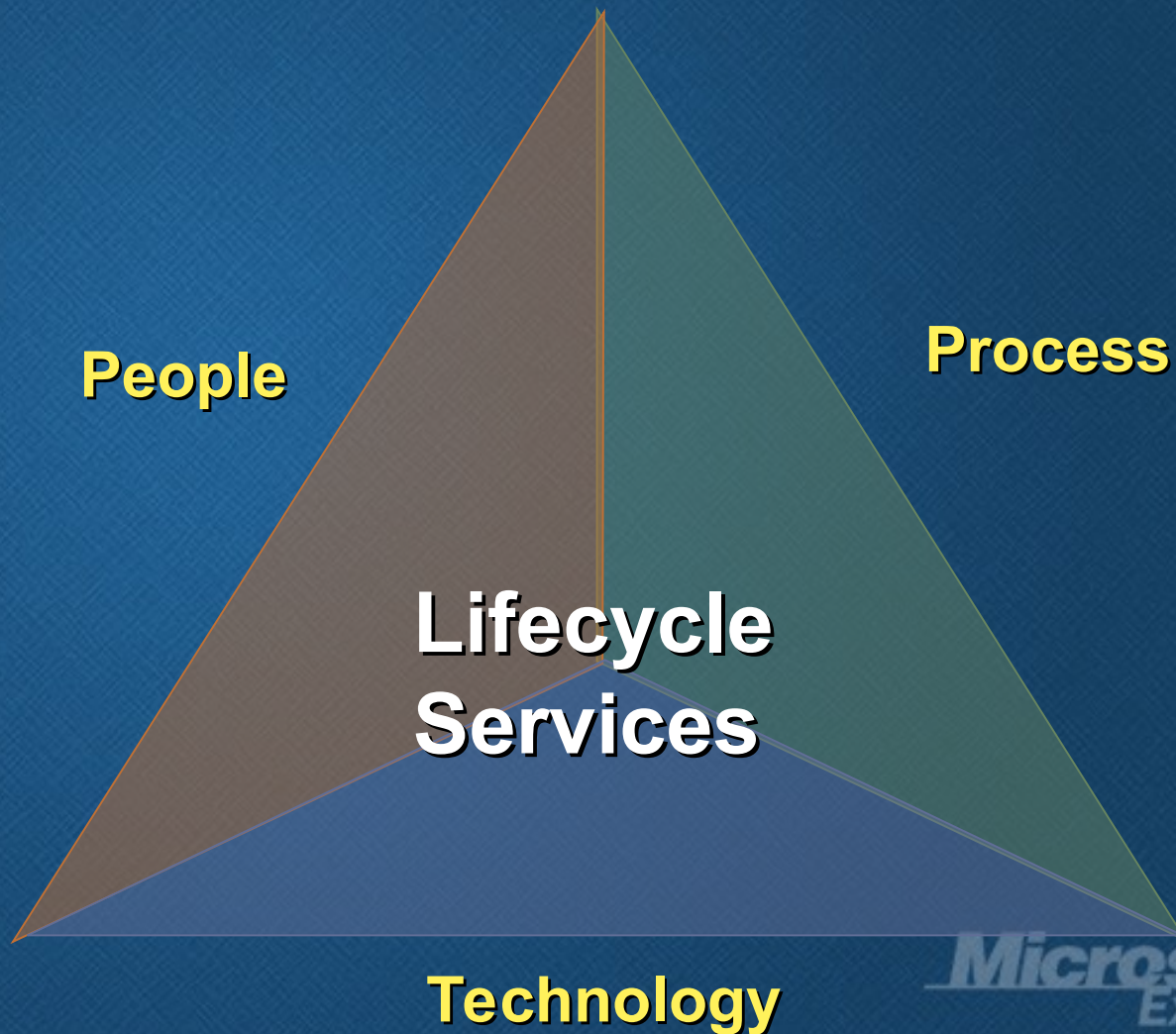


- Scale up and out
- Reliability a measure of both business availability and server
- Core business processes need highest levels of assurances/reliability

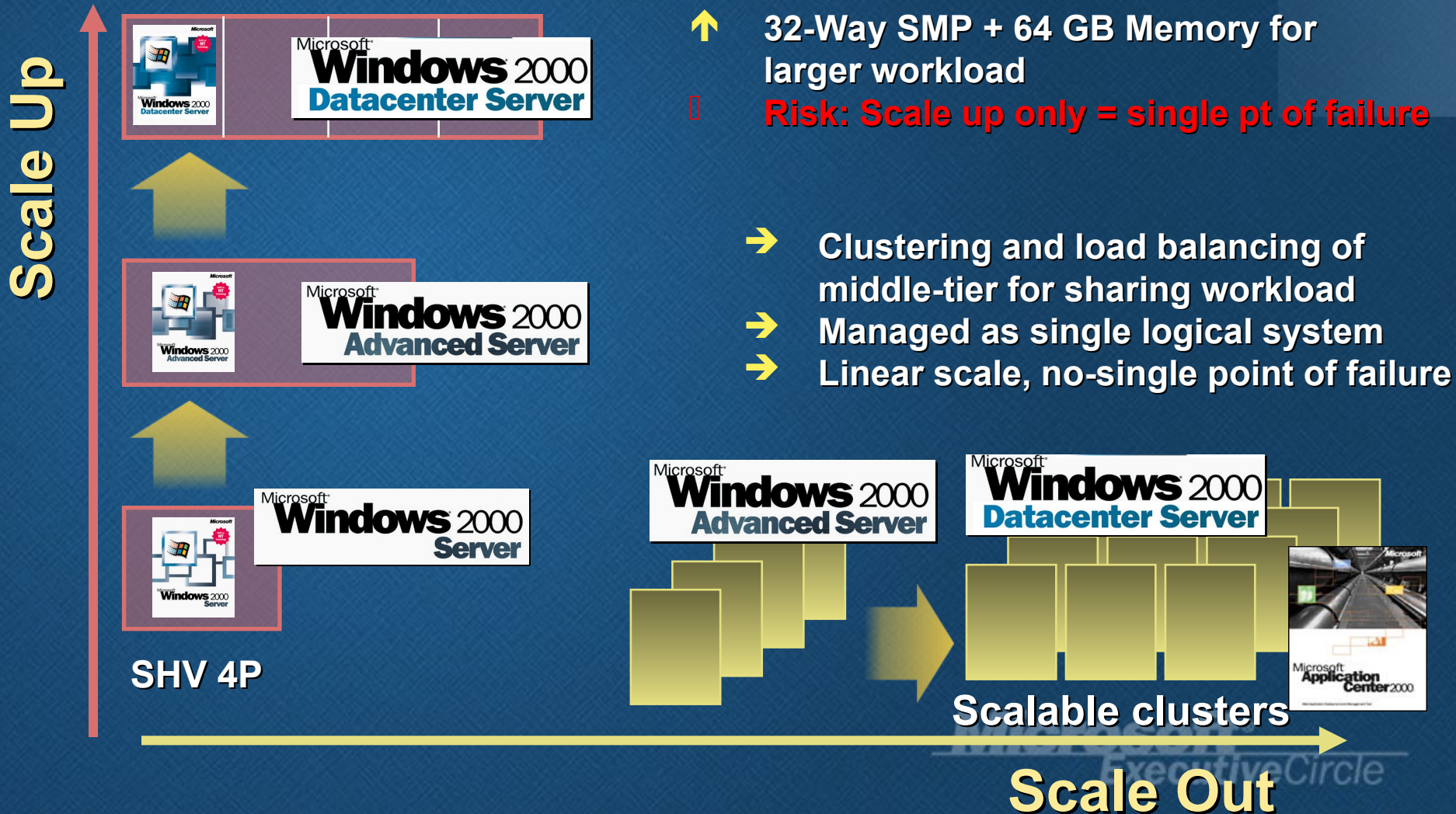
Your Reliability Needs



Mission Critical Computing Requirements



Business Availability: Requires Scale Up and Out





Demonstration 1
Windows 2000 Advanced
Server
High Availability Web Platform

“We needed scalability and reliability to meet our success metric of 99 percent on-time delivery. Windows 2000 Server gave us both and enabled our back-end infrastructure to meet our critical business success factors of improved customer satisfaction and increased revenues!”

-- Mr. Gary King, CIO

Result

300% increased revenue
99% fulfillment accuracy

Solution

Windows 2000 Server

Business Goals

- **Grow the business, improve customer satisfaction, reduce costs**

Impact

- **Flexible and Scalable system**
 - *Revenues up 300%*
 - *Customers up 38%*
- **Reliable Infrastructure**
 - *Delivery accuracy of 99%*
 - *Repeat customer rate at 66%*
- **Control spending**
 - *Cost per transaction reduced 25%*

Reliability Improvements

Eliminated Planned Downtime

App install/config

- Windows file protection
- Windows installer

OS configuration

- Eliminated dozens of configuration reboots

OS install

- Service pack slipstreaming

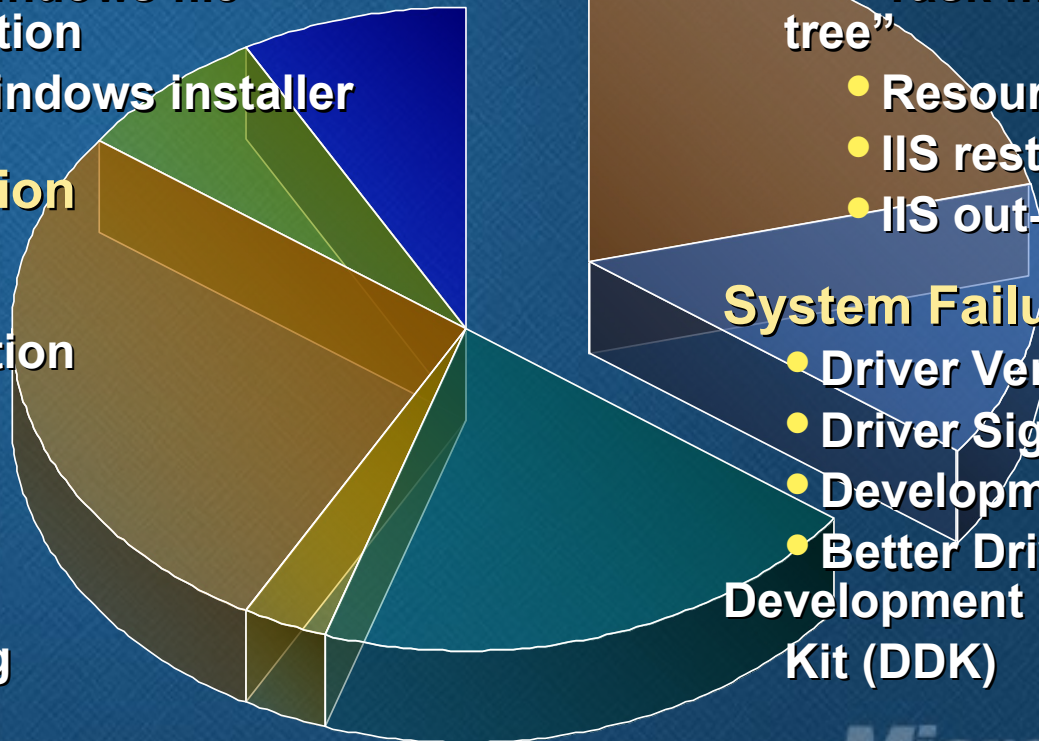
Eliminated Unplanned Downtime

App Failure

- Task mgr "kill proc tree"
- Resource Partitioning
- IIS restart
- IIS out-of-process

System Failure/Bluescreen

- Driver Verifier
- Driver Signing
- Development Labs
- Better Driver Development Kit (DDK)





Demonstration 2
Windows 2000 Server
Web Server Reliability with IIS 5.0

GMAC Commercial Mortgage

"I can't imagine that we could have built MortgageRamp within our timeframe on any other platform. And to get the flexibility we need, the .NET-based architecture is the ideal solution. The system architecture is unbelievable.

-- Niraj Patel, CIO

Result

Full interoperability between GMAC CM's lenders partners

Solution

.NET Enterprise Servers

Business Goals

- **Launch internet site in record time**
- **Guarantee maximum interoperability**
- **High availability**
- **Integration of Mobile devices**

Impact

- **Hardware and software was available off the shelf**
 - *Quickly and easily integrated*
- **Full interoperability**
 - *Standardized integration*
- **99.999% system uptime**
- **Architecture is device-ready and device agnostic**

Video Case Study: Automatic Data Processing

Commitment to Business Availability

- **Compaq**
 - Offering up to 99.99%+ Uptime Guarantee for Windows 2000 Datacenter on ProLiant systems
http://www5.compaq.com/services/available/av_uptime
- **Unisys**
 - Unisys offers 99.99% availability...or greater...in a clustered environment on a certified platform
<http://www.unisys.com/windows2000/datacenter>
- **HP**
 - HP's "Always On" solutions for Windows Servers in controlled environments; <http://www.hp.com/windows2000>
- **Stratus**
 - 100% uptime program for ftServer hardware, value-added software, and Windows 2000 operating system kernel
<http://www.stratus.com/products/nt/>
- **Motorola**
 - One of 1st carrier-grade, high-availability Windows 2000 offerings for voice & multimedia apps designed for 99.999% availability
<http://www.mcg.mot.com/>

How Do We Get There?

Know-how and show-how

- Focusing on right projects
- Service offerings
- IT strategy tools/guidance
- Rapid economic justification

Service Delivered

Planning

Business/IT Plans Aligned

Preparing



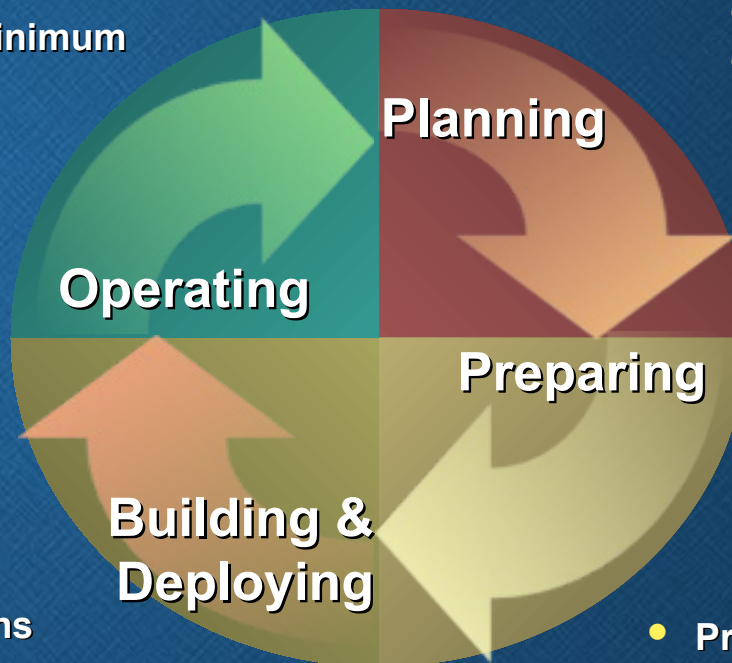
- Preparing for change
- Service offerings
- Readiness tools and guidance

Organization Ready

Building & Deploying

Release Ready

Operating



- Deliver agreed SLA at minimum cost
- Service offerings
- Operational tools and guidance



- Building and deploying flexible solutions
- Service offerings
- Solution tools and guidance

First Steps

- **Understand Technology Reliability**
 - Ask the questions
- **Understand Your Reliability Requirements**
 - Understand your business requirements and constraints
- **Take the Next Step**
 - Do an evaluation or pilot
 - Engage [YOUR COMPANY NAME]

Windows 2000 Server Delivers Reliability Through:

- **Business Value**
- **Availability**
- **Performance**
- **Scalability**
- **Internet-Ready**
- **Hardware**
- **Prepare for .NET**



Microsoft[®]

Microsoft[®]
ExecutiveCircle